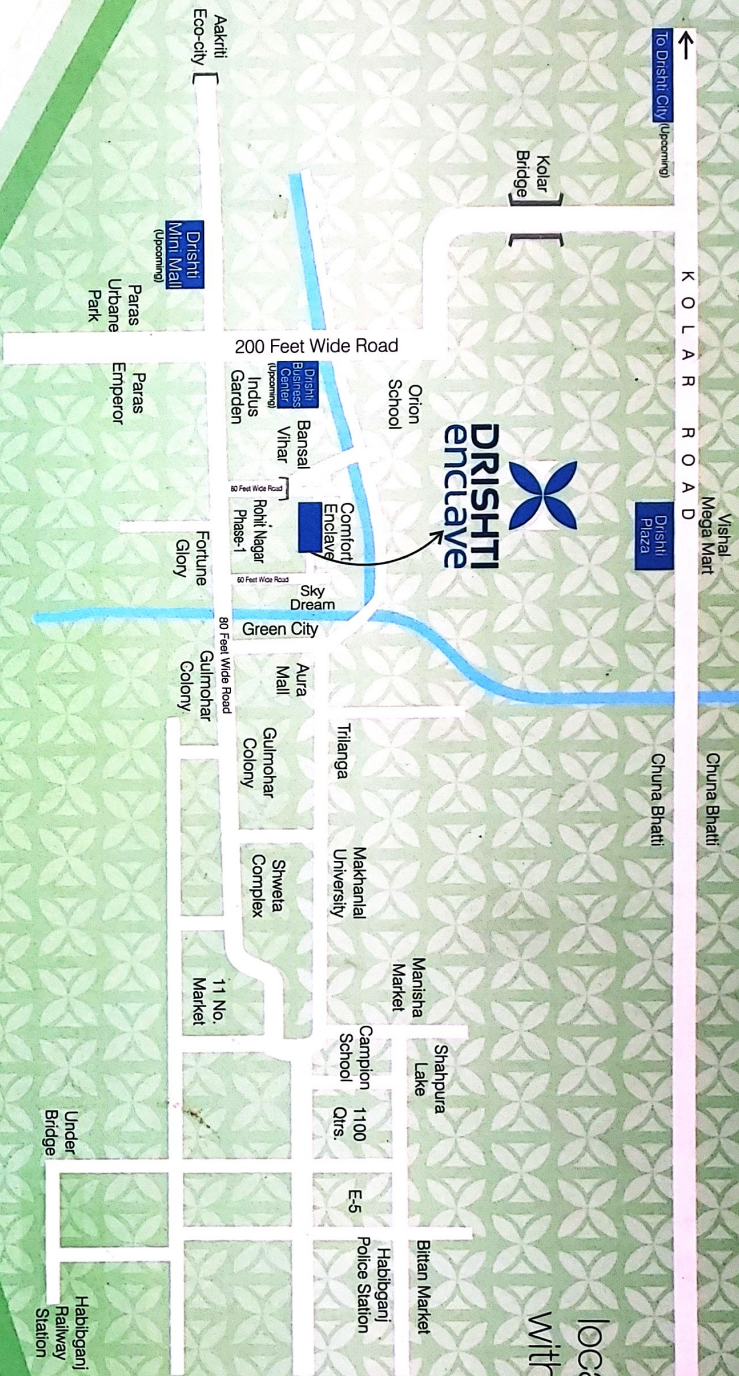


located at the very best spot
with most convenient access



Architect -



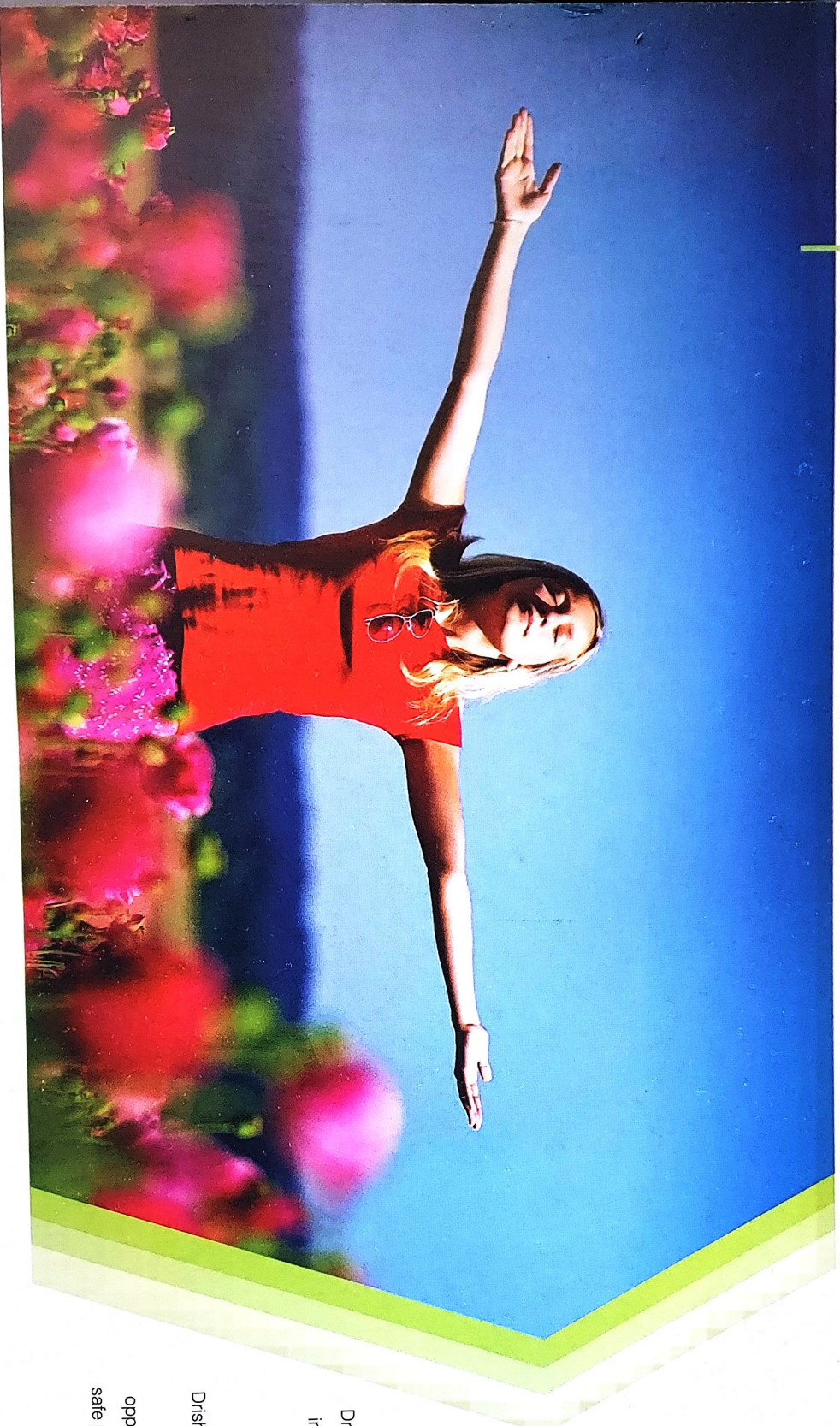
Dimensions
AR. VIPIN CHAUHAN
architect, engineers and interior designers



DRISHTI BUILDERS
36-37 Press Complex,
MP Nagar, Zone-I, Bhopal 462011
Tel.: 9826025311, 9303137170, 9826076673
www.drishtibuilders.com
info@drishtibuilders.com

All visual photographs used in this brochure are artists impressions. All specifications, sizes & layout etc. are tentative & subject to such variations, additions as decided by the Architects or by the Promoters.

step into a dream lifestyle that's an
experience with every passing day



designed for life

Introducing, an evolution in Lifestyle living
Lifestyle for a lifetime

Drishti Enclave has been designed with every consideration for individual needs within a communal environment. A heaven of tranquility away from the hustle and bustle of city life, Drishti Enclave aims to put back a little of what life takes out.

Drishti Enclave is a stimulating settlement for integrated living and quality family time. A variety of different amenities provide an opportunity to interact and connect with each other. A secure and safe place, the gated community living provides absolute peace of mind for superior life style within a protected environment.

Drishti Enclave is enlightened living at its very best and offers everything you and your loved ones deserve.

Drishti Group, a highly diversified, independent industrial group devoted for Quality & Satisfaction.
We publish books for sharper minds,
...and we build houses so you can have a peaceful mind.
Nurtured from the seed of a single great idea- "Quality beyond Compromise".
Drishti Offset has revolutionised the printing industry in the heart of India.



welcome to Drishti Enclave. awaiting you is a lifestyle amidst pollution free lush green landscape which has been designed by a legendary architect.



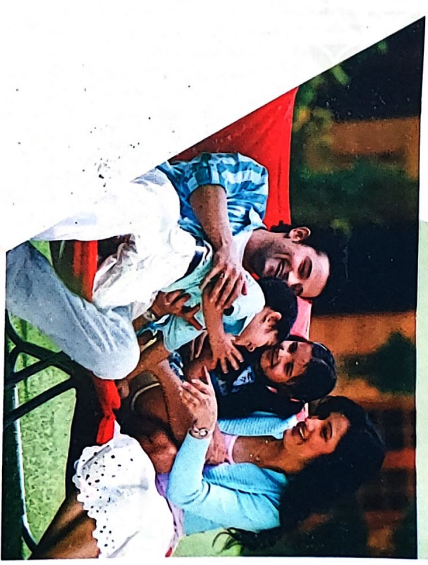
Drishti Enclave where quality enriches life

Apartment life. Villa style. Presenting a refreshing new look at modern living. Drishti Enclave, with welcoming green spaces, invigorating fresh air and sunlight, and modern design concepts that complement your sensibilities. Drishti Enclave. Quite simply, one of the best decisions you will ever take.

Close your eyes for a moment and open them again, and take in the feeling that the apartment you are in feels so much like a villa. Get ready to experience apartment living redefined. Walk in, and be impressed by the sense of space and the attention to detail and workmanship. Appreciate the uncompromising quality all around and the various amenities that befit modern residences.

Your apartment at Drishti Enclave. So much more than you imagined but just what you've always deserved.

the architecture is timeless. the location is splendid.
the apartments are luxurious. the address is Drishti Enclave.



special features

- Fully enclosed Campus secured with high-tech systems.
- 100% Power Backup supply for common area and lift.
 - Beautifully landscaped Open Spaces.
 - State-of-the-art Club House with Party lawn.
 - Children's play area.
- Cement Concrete/Paver Roads throughout the township.
 - Vastu based Campus Layout
 - Street Lighting in entire campus.
- Underground Cabling for Electrification & Telecommunication.
 - Three side open view in almost every apartment
 - Reserved car parking for each apartment
 - Centralized Water Supply.
- Efficient Sewage Disposal & well designed Rain Water Harvesting.
- Anti Termite Treatment in each Apartments.
- Approved by Town and Country Planning Department and Bhopal Municipal Corporation
 - Loan Facility by leading Banks

It exists for those who
don't believe in ordinary



specifications

STRUCTURE

- Earthquake Resistant R.C.C Structure.

FLOORING

- Flooring: 2 x 2 vitrified tiles. • Paved blocks/tiles in Porch area.
- Granite Staircase. • Ceramic Tiles flooring on terrace.

DOORS & WINDOWS

- Doors: Wooden frame with laminated Flush doors.
- Windows : 3 Track Powder coated Aluminium with panel for Mosquito net.

TOILETS

- Premium quality ceramic tile flooring and designer wall tiles up to 7' height.

- Good quality Plumbing and ceramic fittings of renowned brand.

KITCHEN

- Granite counter with Stainless Steel Sink.
- Plumbing Point for water filter, 2' dado over counter.

WALL FINISHES

- Walls: Good quality Acrylic Emulsion paint in interiors and equivalent quality paint for exterior walls. • Enamel Paint on MS Grill works.

ELECTRICAL

- Concealed Copper wiring with Modular switches and M.C.Bs. • Inverter point for one Light and one Fan point in each room. • 15A point for microwave in kitchen and Geyser in toilets. • AC point in each Bed Room. • One Telephone and TV point in Living and Master Bedroom.

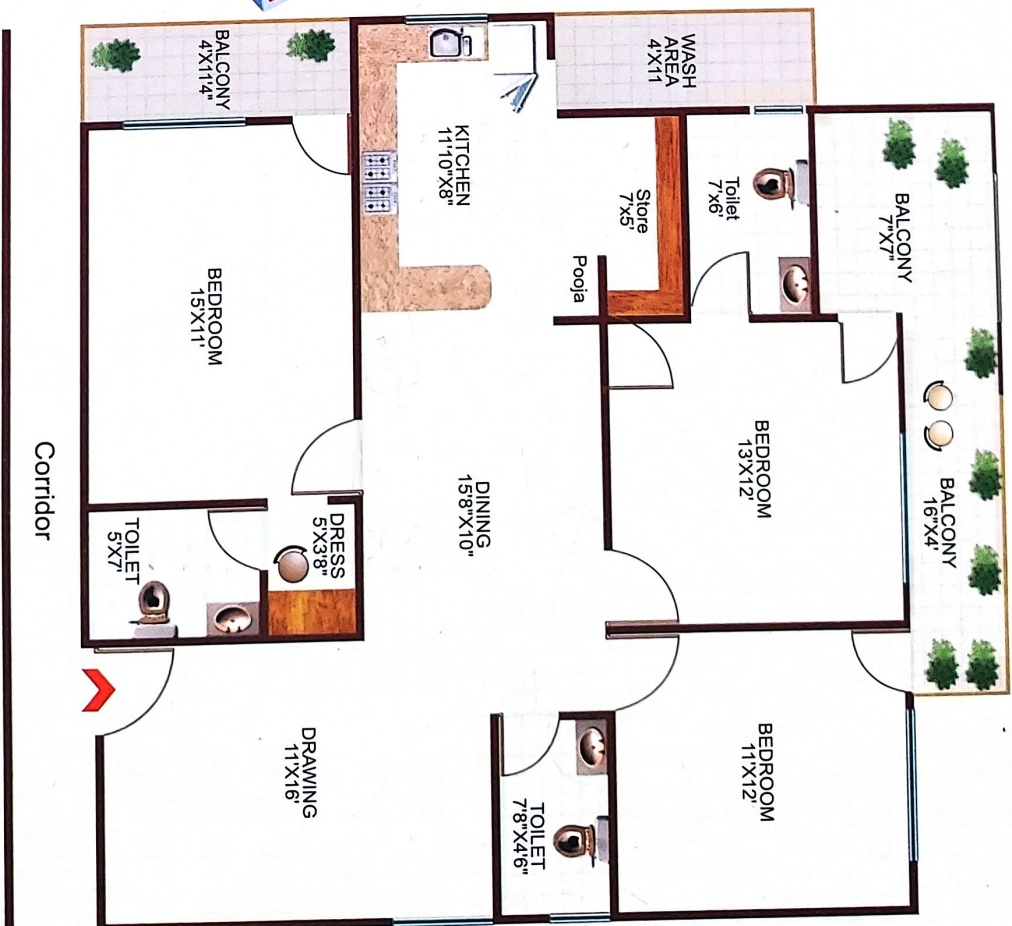


3 BHK

super built up area 1510 Sq.ft.



3 BHK  super built up area 1790 Sq.ft.





4 BHK super built up area 1840 Sq.ft.



be free to chase your dreams
be free to demand what you like
be free to own your life



DRISHTI
enclave

BAWARIA KALAN